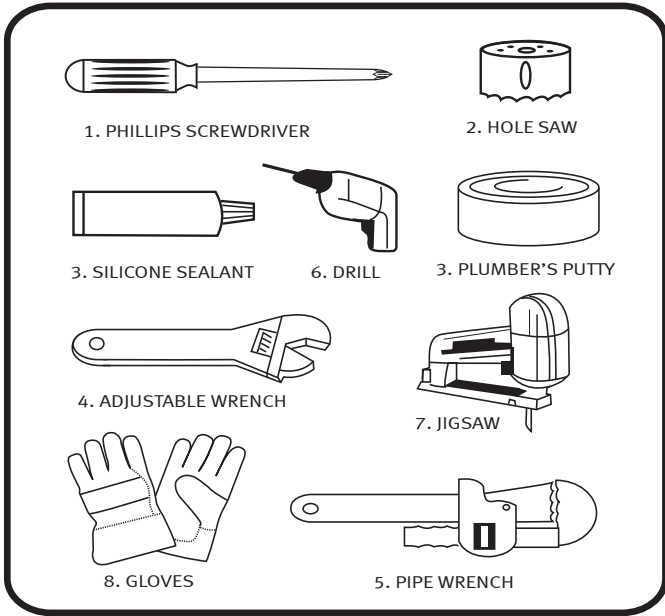




Topmount Installation & Care Instructions



CONGRATULATIONS!

You have purchased a quality product designed for long lasting beauty and easy installation. The following instructions will take you step-by-step through the installation process and care of your product. We recommend reading the entire instruction booklet before beginning.

TOOLS AND MATERIALS

1. Long phillips head screwdriver
2. 2" Hole saw if you are installing a new countertop
3. Tube of silicone sealant or plumber's putty for mounting the faucet, strainers and sink
4. Adjustable wrench
5. Pipe wrench if steel pipe is used
6. Drill
7. Jigsaw
8. Gloves

**CAUTION: Risk of personal injury.
Metal surfaces are sharp and can cause severe cuts.
Use gloves and handle the sink with care.**

BUYER PROTECTION LIMITED WARRANTY

SINKS

Franke Consumer Products, Inc. warrants its sinks to be free of manufacturing defects in material and workmanship under normal residential usage for the lifetime of the sink.

AUTHORIZED RESELLERS

Warranties are not applicable to products sold by unauthorized resellers. The consumer accepts responsibility to research the integrity and reputation of the reseller to ensure they are authorized to sell and provide appropriate pre purchase and post purchase service. Internet resellers should be particularly scrutinized as they are very difficult to evaluate and often provide very limited or no customer service.

GENERAL

This warranty applies only to the original owner, providing the product has been installed in accordance with our installation instructions, used as recommended and in a normal residential application. In the event of a warranty claim, the owner will be required to provide proof of purchase, a sales receipt.

This warranty covers all components which make the product operational. Franke Consumer Products, Inc., at its option, may repair or replace the product or components necessary to restore the product to good working condition. Franke reserves the right to inspect the installation prior to the actual replacement of the product or component part.

This warranty does not cover misuse or abuse, accidental damages, scuffs or scratches, improper installation, abnormal usage, negligence or damage caused by improper maintenance or cleaning. Normal wear of parts is excluded from the warranty. Damage caused by impurities or acts beyond our control are not covered. **Any product or part which has been repaired or altered in any manner outside of Franke's factory, unless previously authorized in writing by Franke, will void warranty. Any replacement excludes transportation and any labor re-installation costs.** This warranty does not allow recovery of incidental or consequential damages such as loss of use, delay, property damage or other consequential damage, and Franke accepts no liability for such damages.

The Franke warranty is limited to the above conditions and to the warranty period specified herein and is exclusive. Franke DISCLAIMS all other warranties, expressed or implied, including IMPLIED WARRANTIES OF MERCHANTABILITY AND/OR FITNESS FOR AS PARTICULAR PURPOSE. This warranty gives you specific legal rights that may vary from state to state.

WARRANTY:
Limited Lifetime Warranty

For additional products and accessories, please visit our website or call our customer service at 1.800.637.6485

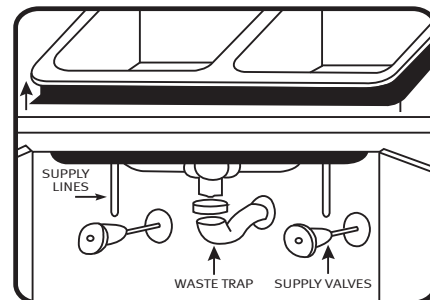
www.frankeusa.com



Step 1

REMOVING EXISTING SINK

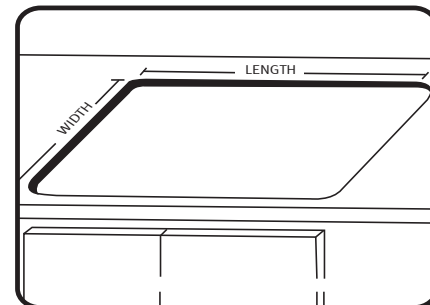
1. Leave the faucet and drain outlet in place.
2. Shut off water supply valves. (Usually under sink)
3. Relieve pressure by opening hot and cold faucet valves. Let water run until it stops flowing.
4. Disconnect the supply lines from the water supply valves.
5. Disconnect the drain fitting from the waste trap.
6. Remove frame or rim fasteners around underside of old sink.
7. Lift sink out with faucet and drain fitting still in place.



Step 2

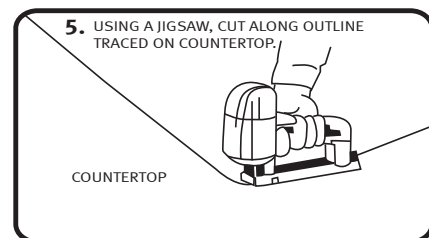
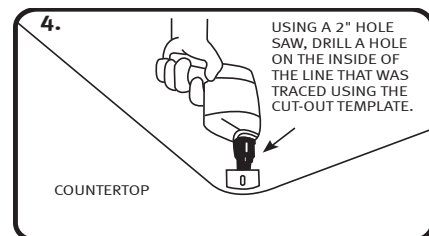
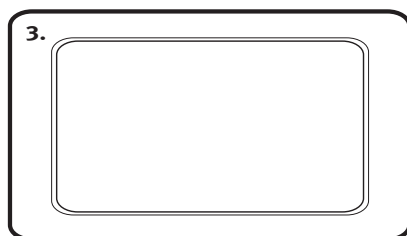
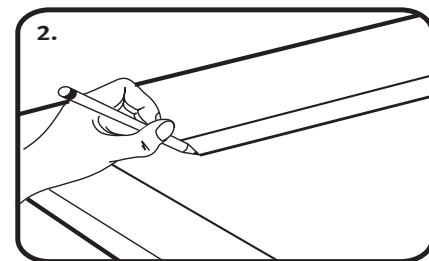
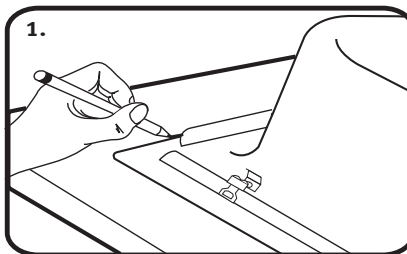
PREPARING AN EXISTING COUNTERTOP

1. Make sure existing countertop cutout opening is the proper size. Set the new sink into opening. The sink rim should rest evenly on the countertop. (Slight adjustments can be made using a file or a saber saw)
2. Use caution not to chip or crack the counter top when filing or sawing.
3. After final fitting, remove the new sink from cut-out.
4. For new countertop instructions see the following instructions.



PREPARING A NEW COUNTERTOP USING THE SINK AS A TEMPLATE

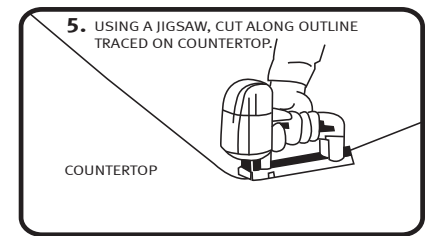
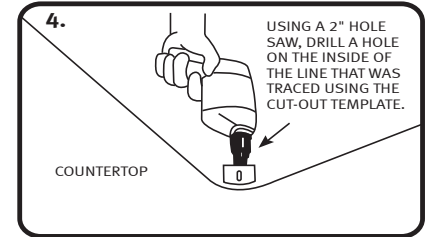
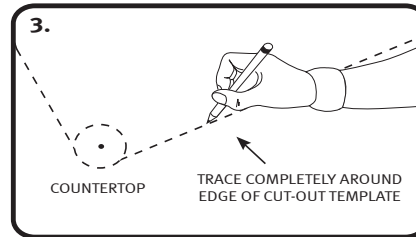
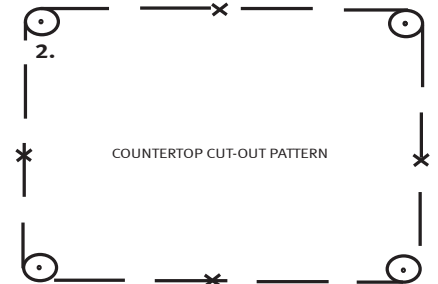
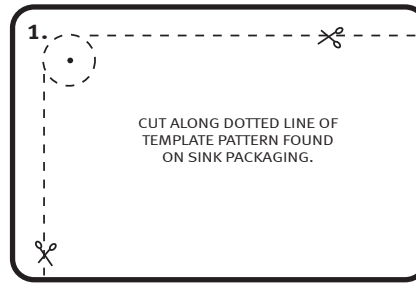
1. Carefully place the sink upside down on the countertop at the desired position. Trace the sink outline on the countertop. (Do not cut along this line)
2. Draw a line $\frac{3}{8}$ " inside the sink outline. Measure the cut-out line you just drew and compare to all sink dimensions. The cut-out line should be approximately $\frac{3}{4}$ " smaller than the overall sink dimensions.
3. Double check both measurements.
4. Drill a pilot hole inside the cutting line.
5. Using a jigsaw, cut along the inside line to cut the opening in the countertop.



PREPARING A NEW COUNTERTOP USING THE CUT-OUT TEMPLATE PROVIDED

(Included in or on the carton)

1. If template is located on the outside of the carton cut along dotted line.
2. If template is not located on the outside of the carton use template provided in the carton. Measure the cutout line and compare to all sink dimensions. The cutout line should be $\frac{3}{4}$ " smaller than overall sink dimension.
3. Trace on the countertop completely around the edge of the template.
4. Drill a pilot hole inside the cutting line.
5. Using a jigsaw, cut along the inside line to cut the opening in the countertop.

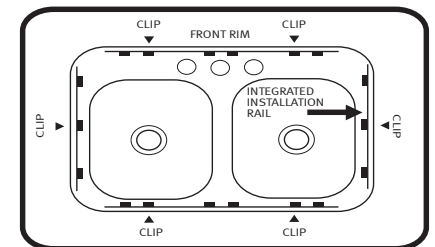
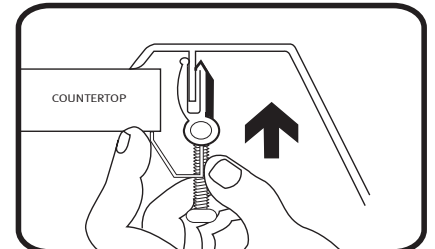


Step 3

APPLYING MOUNTING CLIPS

In some cases, sink may have clips pre-attached

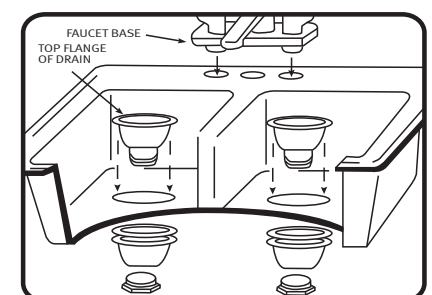
1. Turn sink upside down onto a clean, soft surface.
2. Six clips are recommended for installation. Two extra clips are included if required.
3. Slide the clips over the pre-drilled mounting slot in the sink rim. (See diagram for clip placement) Make sure clip jaws are facing towards outside edge of sink.
4. Make sure the clip snaps are fully seated into the mounting slot.
5. Turn all clip jaws parallel to the sink rim.



Step 4

INSTALLING ACCESSORIES

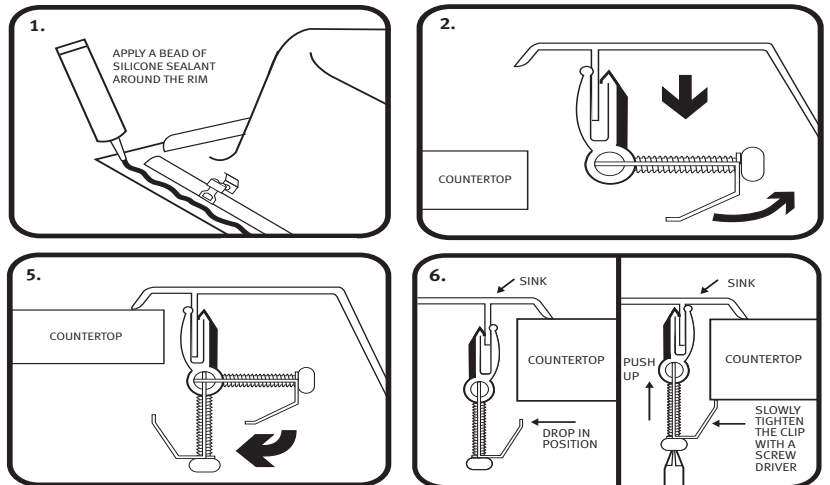
Now is the time to attach your faucet and drains to your new stainless steel sink. Use plumber's putty or silicone sealant under the faucet base and under the top flange of the drain to provide a leak proof seal.



Step 5

INSERTING SINK AND TIGHTENING MOUNTING CLIPS

1. With sink in the upside down position, place a continuous and generous bead of silicone sealant or plumber's putty around the entire perimeter of the rim. This serves as a watertight seal.
2. Turn clips back as noted in diagram, to prepare for sink positioning in countertop.
3. Lift sink, turn face up, and lower into the countertop cutout opening.
4. Line up front rim with the front edge of the counter.
5. Turn clips back to original position for tightening.
6. Underneath the countertop begin tightening clips with a screwdriver in an even fashion, alternating sides while tightening, until the entire rim is sealed.
7. Do not over tighten. It is only necessary to draw the rim down snugly to the countertop.
8. Wipe excess sealant from perimeter with a wet cloth.



Step 6

FINISHING

1. Re-connect and tighten hot and cold faucet supply lines, strainer, drain, and trap assembly.
NOTE: Depending on the location of sink drain holes it may be necessary to adjust the drain pipe fittings under the sink to accommodate the new sink installation.
2. Turn on water supply, check all connections for leaks. If leak appears, tighten joint slightly. Do not over tighten.
3. With stopper in place fill sink and check for leaks under sink and around drain flange.
4. Remove stopper and let water drain while checking drain connections.

CARE INSTRUCTIONS

To insure long-lasting beauty the best preventative maintenance is to ensure that the sink is clean, dry and exposed to room atmosphere when not in use. Rinse and towel dry to keep it shining and relatively free of water spots, especially if you have hard water.

To clean your sink, use the mildest procedure that will do the job, generally liquid detergent and water. Rinse and dry.

STAINS. On mirror finish surfaces use a metal polish recommended for stainless steel. Peek®, Maas®, Flitz® are suitable examples. All other finishes can be cleaned with products such as Bon Ami® or Soft Scrub®. Always rub with the grain where applicable.

To avoid hard water spots wipe sink dry with clean soft towel after use.

CAUTION. Steel wool pads leave tiny particles that may cause rust spots. Rubber mats are acceptable but removed after each use. Chlorine bleach can cause corrosion and pitting. Drain cleaners with sulfuric or hydrochloric acid can attack stainless steel.

